

SCHEDULED WASTE ANALYSIS AND CHARACTERIZATION



**TRAINER
CHM DR MALARVILI**

OVERVIEW TRAINING

This program specially designed to enhance the waste generators with relevant information and knowledge to assist in waste determination process. The participants shall be exposed to various topics such as Waste determination, analysis of waste using laboratory method, TCLP, TTLC analysis, wet chemistry method and source identification and unknown waste classification method.

WHO SHOULD ATTEND?

- Competent person
- Chemist and laboratory technicians
- Executives and Managers dealing with scheduled waste
- Any person dealing or handling scheduled waste

TRAINING FEE:

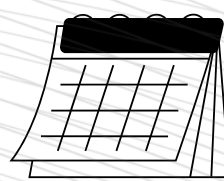
ENSEARCH Member = RM800

Non Member = RM1000

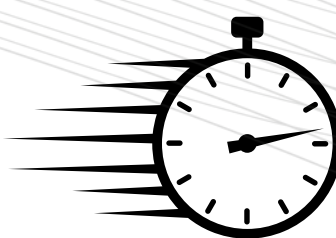
Individual Membership + Training = RM1050

PROGRAM OBJECTIVE

- To demonstrate the participants the correct sampling method for unknown scheduled wastes.
- To provide detailed information on the Scheduled wastes analysis and how to interpret the data obtained via laboratory analysis.
- To determine the characteristics of scheduled wastes using the analytical results and match with the reference data.
- To provide a practical guide in classifying scheduled wastes using analytical and characterization results obtained.



23 & 24 AUGUST 2025



8.30 A.M - 5.00 P.M



**ENSEARCH OFFICE,
PETALING JAYA**

**BOOK
NOW**



INQUIRIES

Please contact our program secretariat for more training details



03-7770 9445



po-training@ensearch.org



www.ensearch.org


SCAN ME

TRAINER INFORMATION



ChM Dr. Malarvili Ramalingam (A.M.N.) is a Senior Scientific Officer at the Department of Chemistry Malaysia, with over 24 years of expertise in environmental and analytical chemistry, laboratory quality management, and chemical safety. She holds a Ph.D. in Environmental Science/Chemistry from Edith Cowan University, Australia, and serves as a Fellow Member and Honorary Treasurer of Institut Kimia Malaysia (IKM). Dr. Malarvili is also a certified HRD Corp Accredited Trainer, ISO 17025 Technical Assessor, and Chemical Health Risk Assessor. She has led over 30 training programs on topics such as chemical and laboratory waste management, scheduled waste analysis, method validation, and laboratory quality systems. She has presented and chaired numerous international and national scientific events and authored more than 20 research publications. Her leadership and technical contributions to national environmental standards and crisis management have earned her several accolades, including the federal honor of Ahli Mangku Negara (A.M.N.).

DAY 1 – 23RD AUGUST 2025

TENTATIVE PROGRAMME

9.00 a.m - 9.45 a.m	<u>WELCOME REMARKS</u> <ul style="list-style-type: none"> • Administration • Ice breaker and Safety Briefing • Trainer Introduction
9.45 a.m - 10.15 a.m	<u>PRE-ASSESSMENT</u>
10.15 a.m - 10.30 a.m	<i>COFFE BREAK</i>
10.30 a.m - 12.00 p.m	<u>OVERVIEW</u> <ul style="list-style-type: none"> • General information on Scheduled Waste • Hazardous Chemical and industrial Waste • Management of Waste and Responsibilities of Waste Generators
12.00 p.m - 1.00 p.m	<u>CHEMICAL WASTE</u> <ul style="list-style-type: none"> • Storage Handling and Disposal • Dangerous, toxic, and poisonous waste • Waste Handling
1.00 p.m - 2.00 p.m	<i>LUNCH BREAK</i>
2.00 p.m - 3.00 p.m	<u>PRACTICAL SESSION 1-WASTE IDENTIFICATION AND ANALYSIS</u>
3.00 p.m - 4.00 p.m	<u>SAMPLING PROCEDURE AND TECHNIQUE</u> <ul style="list-style-type: none"> • Oil Spill • Sludges and Slurries • Liquids • Solids • TCLP Procedur
4.00 p.m - 4.15 p.m	<i>COFFEE BREAK</i>
4.15 p.m - 5.00 p.m	<u>RECAP OF DAY 1, AND QUESTIONS & ANSWER</u>
5.00 p.m	End of Day 1

TRAINER INFORMATION



ChM Dr. Malarvili Ramalingam (A.M.N.) is a Senior Scientific Officer at the Department of Chemistry Malaysia, with over 24 years of expertise in environmental and analytical chemistry, laboratory quality management, and chemical safety. She holds a Ph.D. in Environmental Science/Chemistry from Edith Cowan University, Australia, and serves as a Fellow Member and Honorary Treasurer of Institut Kimia Malaysia (IKM). Dr. Malarvili is also a certified HRD Corp Accredited Trainer, ISO 17025 Technical Assessor, and Chemical Health Risk Assessor. She has led over 30 training programs on topics such as chemical and laboratory waste management, scheduled waste analysis, method validation, and laboratory quality systems. She has presented and chaired numerous international and national scientific events and authored more than 20 research publications. Her leadership and technical contributions to national environmental standards and crisis management have earned her several accolades, including the federal honor of Ahli Mangku Negara (A.M.N.).

DAY 2 – 24TH AUGUST 2025

TENTATIVE PROGRAMME

9.00 a.m - 10.00 a.m

DETERMINATION OF WASTE

- Identification of Waste
- Manufacturing and Industrial Process
- Raw Material and by product waste identification
- Laboratory identification process

10.00 a.m - 10.30 a.m

COFFE BREAK

10.30 a.m - 12.00 p.m

ANALYTICAL AND IDENTIFICATION OF SCHEDULED WASTE

- TCLP & TTLC Analysis
- Wet Chemistry Method
- Heavy metals and instrumentation
- In house determination method

12.00 p.m - 1.00 p.m

UNKNOWN WASTE IDENTIFICATION

- Abandoned waste Identification
- Unknown Waste Identification Procedure
- Unknown Material Screening Report

1.00 p.m - 2.00 p.m

LUNCH BREAK

2.00 p.m - 3.00 p.m

GROUP PRACTICAL SESSION 2: WASTE ANALYSIS EXERCISE.

3.00 p.m - 4.00 p.m

WASTE COMPOSITION ANALYSIS AND LABORATORY PROCEDURE

- Unknown Waste identification procedure
- Preparation of Waste Screening Report
- Guideline for Waste Analysis
- Industrial, Laboratory and chemical waste
- Waste Acceptance Analysis and

4.00 p.m - 4.15 p.m

COFFEE BREAK

4.15 p.m - 5.00 p.m

POST -ASSESSMENT AND EVALUATION

5.00 p.m

CERTIFICATE PRESENTATION AND CLOSING

INQUIRIES

Please contact our program secretariat for more training details



03-7770 9445



po-training@ensearch.org



www.ensearch.org